

Optomap Retinal Exam

(Alternative to Pupil Dilation)

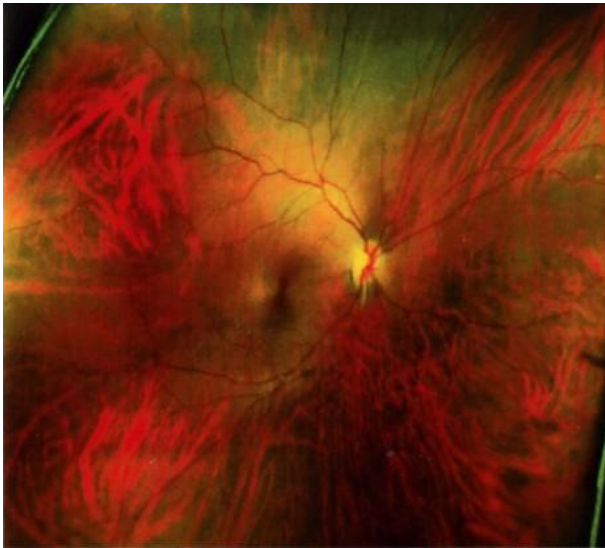
The **Optomap Digital Retinal Scan** captures and analyzes an image of virtually the entire retina, without the need for pupil dilation, for the early detection and management of eye disease.

Dr. Doyle Holle is concerned about retinal problems including macular degeneration, glaucoma, retinal holes or detachments, and systemic diseases such as diabetes, stroke, and high blood pressure. These conditions can lead to serious eye health problems, including partial loss of vision or blindness and often develop without warning and progress with no symptoms.

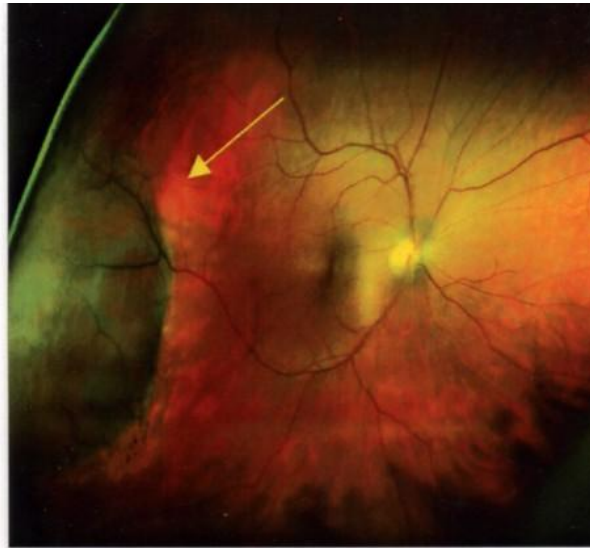
An **Optomap Digital Retinal Scan** provides:

- 1) An eye wellness scan
- 2) An in depth view of the retinal layers (where disease can start)
- 3) The ability for you to view your Optomap Digital Retinal Scan with Dr. Holle during your exam
- 4) A yearly, permanent record for your medical file, which gives Dr. Holle a baseline for future comparisons of "unusual but normal finding" and the tracking and diagnosing potential eye disease.

The **Optomap Digital Retinal Scan** is fast, easy and comfortable.



Healthy Retina



Unhealthy Retina

Insurance typically does not cover any advanced screening technology beyond the general eye exam.

Dr. Doyle Holle strongly recommends the Optomap Digital Retinal Scan once a year for all patients.

Please check one of the following:

I would like to have the **Optomap Digital Retinal Scan** for \$34.00.

I prefer to get my eyes dilated today. I understand that my vision will be blurry for 2 hours and I will be very sensitive to light for 4 hours.

I prefer Dr. Holle to choose (Optomap or Dilation) based on what he feels would be the best for me.

Signature

Date